

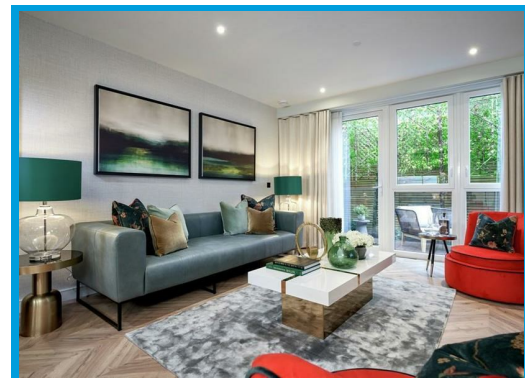
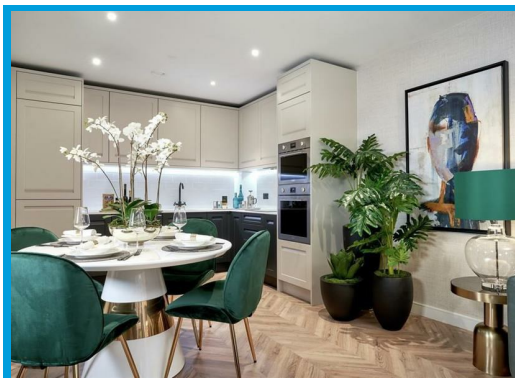
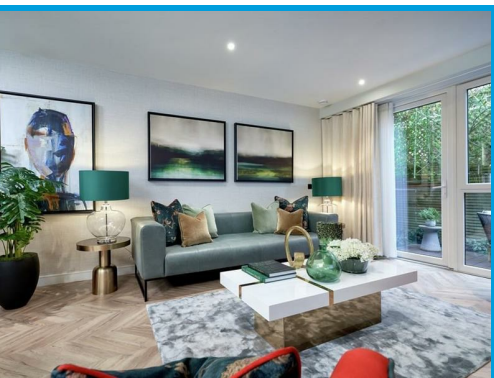


### Royal Exchange, Kingston, KT1 2FQ

£790,000

#### ROYAL EXCHANGE, KINGSTON UPON THAMES

The latest phase of Royal Exchange, Wakefield House, offers a choice of one, two and three bedroom apartments. These high specification homes will sit alongside the beautiful Grade II listed Old Post Office and Telephone Exchange buildings and superb facilities, including a residents only gym, 24-hour concierge and screening room.



Rutherford House - Plot 46 - 2 Bedroom Apartment - 905 sq ft -situated on the 3rd Floor with a private balcony.

A brand new development by St George, in the heart of historic Kingston upon Thames. High specification 1, 2 and 3 bedroom apartments and penthouses with residents' gym, screening room, meeting room and 24 hour concierge.

Kingston is immersed in historic culture being London's oldest Royal Borough.

It has a colourful history that includes the coronation of Saxon Kings and the construction of London's oldest bridge, while present-day Kingston has become one of the capital's most exclusive and desirable places to live.

Our development Royal Exchange is an exciting new development built around the beautiful Grade II listed Old Post Office and Telephone Exchange buildings. It will offer 267 homes, adding a modern touch to complement Kingston's evolving heritage.



```
el=RES_NEW
```

